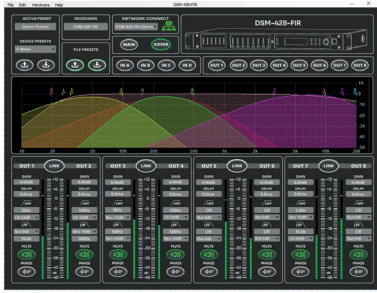
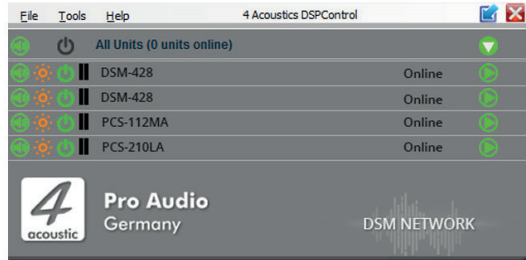
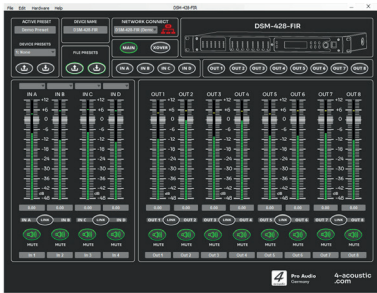




Pro Audio
Germany

DSM Software Installation



Software Download und Installation

The description assumes that you have knowledge of how to use your computer and how to download and install programs. With the latest version of the 4-Acoustic DSM software, you can both carry out a new installation and update an older version that has already been installed.

Download the latest software package for your DSM devices from our website and unzip the file on your computer.

The package contains the latest version of the network client, the latest user interfaces and also the latest firmware for your devices.

The software supports the following operating systems:

- Windows XP with Service Pack 2
- Windows 7
- Windows 8.1
- Windows 10
- Windows 11

- MAC OS-X 10.5.8 or higher

After unpacking the downloaded file, you should find installation files for Windows and Apple Mac in the directory, similar to the illustration.

Name	Änderungsdatum	Typ	Größe
Four-Acoustic_DSPControl_32_bit_v_3_9_...	07.11.2023 10:33	Windows Installer...	59.699 KB
Four-Acoustic_DSPControl_64_bit_v_3_9_...	07.11.2023 10:34	Windows Installer...	59.206 KB
Four-Acoustic_DSPControl_v_3_9_1_1394...	07.11.2023 10:34	WinRAR-ZIP-Archiv	111.472 KB
Installation_Instructions.pdf	07.11.2023 10:34	Adobe Acrobat-D...	151 KB

If you have a 32bit Windows operating system, install the 32bit version of the software.

"Four-Acoustic_DSPControl_32_bit_XXXXXX.msi"

If you have a 64bit Windows operating system, install the 64bit version.

"Four-Acoustic_DSPControl_64_bit_XXXXXXXX.msi"

Apple Mac users install

"Four-Acoustic DSPControl.app",

which is located in the packed directory.

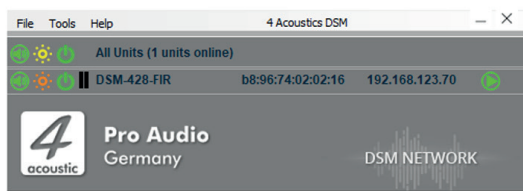
The installation process will guide you through the installation and should not be a problem.

After the installation you should find the icon of the software on your desktop.



The installation is now complete and you can start the software now.

After starting the software, the network client opens.



The network client searches for connected 4-Acoustic DSM devices in the background and then displays them accordingly. It does not matter whether they are 19" processors, active loudspeakers with 4-Acoustic DSM or 4-Acoustic power amplifiers with built-in DSM.

In our example, a DSM-428-FIR was found in the network.

If your device is not displayed, check the connection and make sure that your device is switched on.

Check whether a firewall or VPN server is interfering the communication with your device.

We recommend that you connect devices to the computer via an Ethernet cable and a router with DHCP if possible, as this connection is considerably faster in most cases.

As soon as your device has been found and is displayed, you can carry out the firmware update.

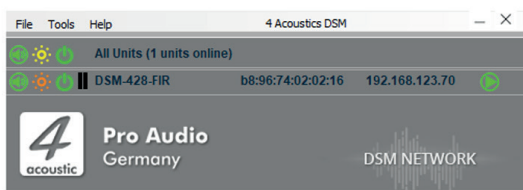
Firmware is the software that runs in your device and controls all the functions in your device. With a firmware update, your device is brought up to date, known errors are corrected and new functions are made available.

With the 4-Acoustic DSM processors DSM-428 series and the DSM power amplifiers SDX, the latest firmware is already included in the installation package and can be installed directly.

For the active loudspeaker systems, the latest firmware is installed with a flash image, which you must download separately for your loudspeaker.

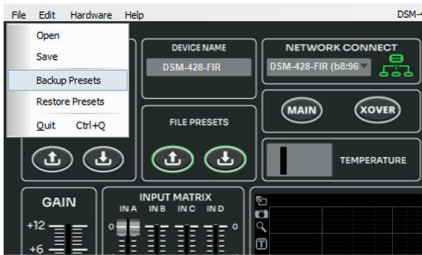
We describe the installation of a flash image separately. Please refer to the download documents for your active loudspeaker.

To transfer the latest firmware to your device, your device should be connected to the computer via Ethernet cable and switched on. Your device will now be displayed in the list of devices that are online, similar to our example.



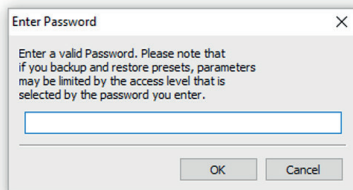
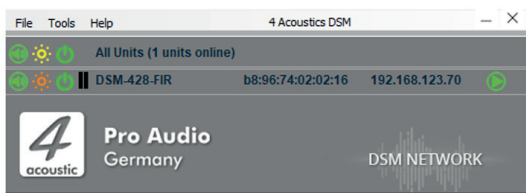
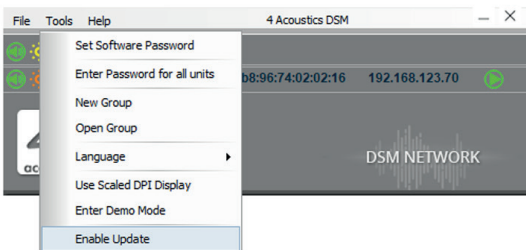
Firmware Update

If the device you want to update is a device that is already in use, you should make a backup of your presets now. These can be lost with the firmware update and should be backed up in advance. To do this, open the input mask by clicking on the green triangle.



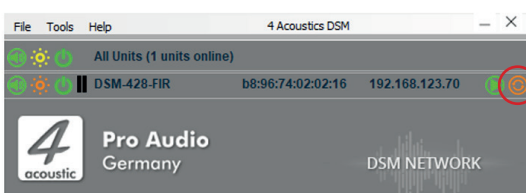
When the editing screen has opened, click on **"File"** and **"Backup presets"**. Select the storage location for your presets and confirm that you want to save them. You can then close the input screen again.

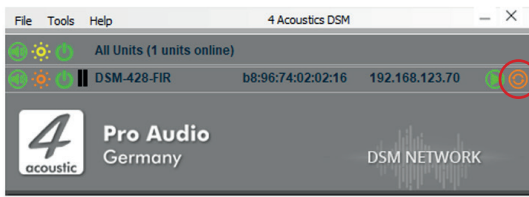
To continue with the firmware update, click on **"Tools"** in the network client and then on **"Enable Update"**.



As you must have administrator rights on your device, you will now be asked for your administrator password. If you do not have this at hand, please contact your dealer or our technical support.

After entering the administrator password, the update function is enabled for your device or devices. You can recognize this by the orange circle to the right of the green circle with the triangle.





Click on the orange circle to start the firmware update for the corresponding device. Confirm this in the following steps. The device will perform various activities, which will take some time. Under no circumstances should you interrupt the update or close the pop-up window.

Do not switch off the device or the computer or disconnect during the update.

The device will restart automatically after the update.

If something went wrong during the process, you can repeat it by restarting the firmware update.